

“DST-010 ToolBox”

User's Guide

DN-DST-010-A

DN-DST-010-B

DN-DST-010

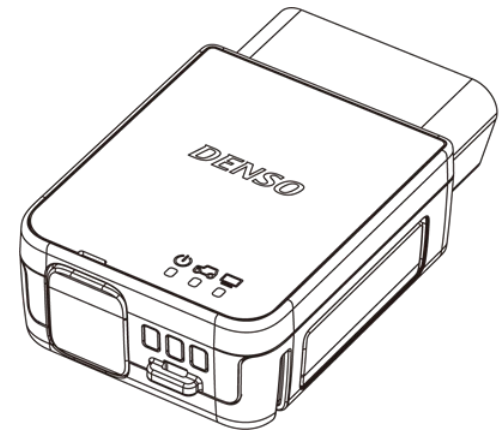


Table of Contents

1. Introduction	3	4. About ToolBox Screen	8
• What is DST-010 ToolBox?	3	• Overview	8
• About Product Overview and Setup of DST-010	3	• Display Conditions for Each Tab	8
2. Operating Environment	4	• Main Window (Common to All Tabs)	9
• Operating Environment	4	Reference: About status indication	10
• Communication Method	4	• 4-1. Home Tab	11
3. Starting and Exiting ToolBox	5	• 4-2. Communication Setting Tab (for Check of Settings)	14
• Starting ToolBox	5	• 4-3. Communication Setting Tab (for Change of Settings)	14
• Exiting ToolBox	6	• 4-4. Infrastructure Mode Setting Screen	15
Reference: Store the screen in the task tray	7	• 4-5. Peer to Peer Setting Screen	18
		• 4-6. Buzzer Setting Tab	19
		• 4-7. Color Tab	22
		• 4-8. Version Tab	23
		• 4-9. Firmware Update Tab	24
		• 4-10. For Administrator Tab	25

1. Introduction

To use DST-010, please install the DST-010 software (DST-010 ToolBox and driver) to your PC beforehand.

Before using, please read this manual thoroughly to ensure a correct and safe use. Please note that the screens and specifications described in this manual are subject to change without notice.

What is DST-010 ToolBox (hereinafter referred to as ToolBox)?

It is an application used for setup and change of settings of DST-010. Through ToolBox, communication with vehicles and PCs connecting to DST-010 is enabled.

To use the diagnosis software, please install ToolBox beforehand.

* ToolBox alone cannot perform vehicle diagnosis.

About Product Overview and Setup of DST-010

- See “DN-DST-010 Hardware Manual” for product overview, usage precautions, warranty and disclaimer of DST-010.
- See “DN-DST-010 Setup Manual” for procedures of loading firmware to DST-010, as well as setup methods.

2. Operating Environment

Operating Environment

- OS: Microsoft Windows 10 / 11 *Excluding ARM-based processors
- The other operating environments are identical to those for the diagnosis software installed in the PC.

Communication Method

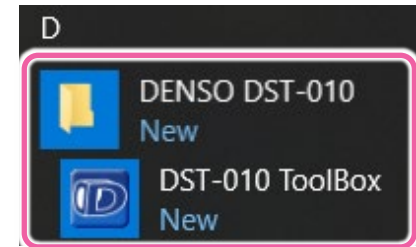
ToolBox communicates with DST-010 using the following communication methods.

Communication Method	How to Use
USB	Connect DST-010 with the PC using the USB cable.
Wi-Fi	[In case of infrastructure connection setting] Connect to the PC via an access point connecting with DST-010. [In case of peer-to-peer connection setting] Connect to the PC which is recognized as an access point of DST-010.
Bluetooth	Connect DST-010 directly by Bluetooth, on which pairing has been executed.

3. Starting and Exiting ToolBox

Starting ToolBox

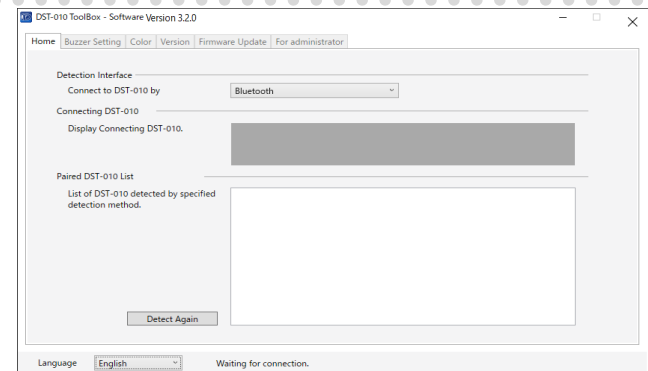
- 1 From the Start menu, select "DENSO DST-010," and open "DST-010 ToolBox" .



[Tips] From version 3.2.0 onward, a shortcut will be created on the desktop, allowing you to launch the application from there. In addition, the software is installed with the startup feature enabled by default, so ToolBox will run in the background when the PC starts.

* If a DST-010 is connected when the PC is powered on, ToolBox will launch automatically.

- 2 The Home screen (with the Home tab opening) of ToolBox is displayed.



[Tips]

When ToolBox is started, an icon will appear in the task tray on the lower right of your PC screen.



DST-010 is
connected

or



DST-010 is
not connected

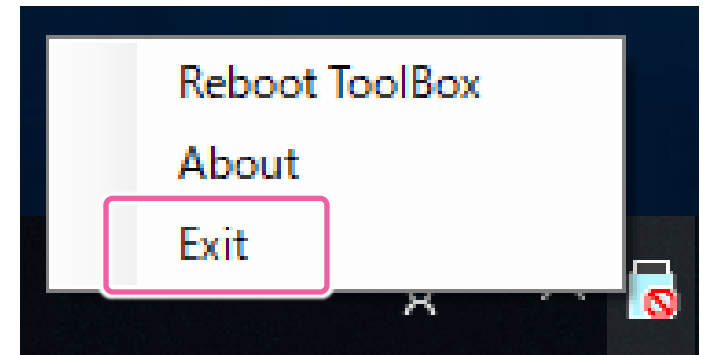
3. Starting and Exiting ToolBox

Exiting ToolBox

- 1 Right-click the icon in the task tray on the lower right of your PC screen.



- 2 Click "Exit" from the menu to exit ToolBox.



[Tips]

Other menu items are shown below.

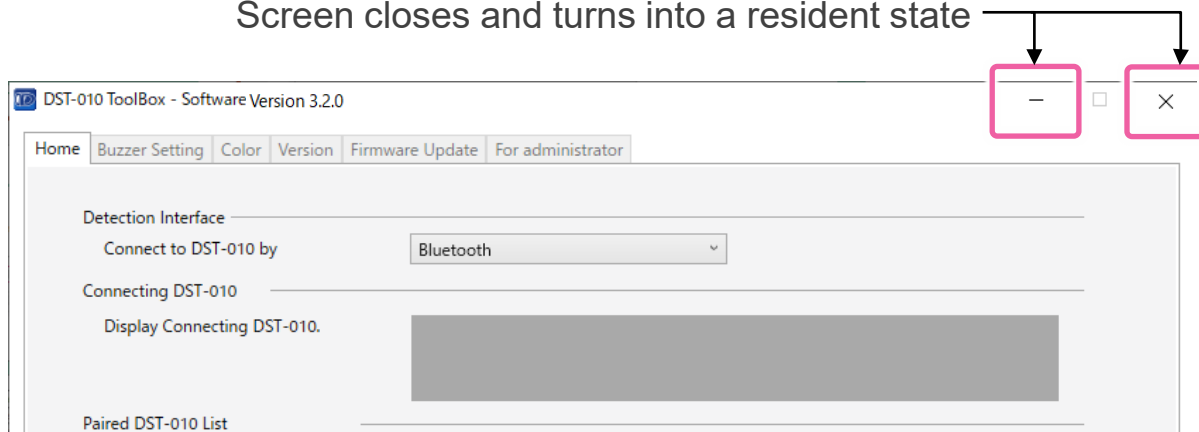
- Reboot ToolBox: Restarts ToolBox.
- About: Displays information about the DST-010 software.

3. Starting and Exiting ToolBox

Reference: Store the screen in the task tray

Click the [-] or [×] button on the upper right of the ToolBox screen, the screen will close and turn into a resident state in the background. The resident state will be kept until you exit from the task tray.

Screen closes and turns into a resident state



[Tips]

When the ToolBox screen closes and turns into a resident state, an icon will appear in the task tray on the lower right of your PC screen.



DST-010 is
connected

or

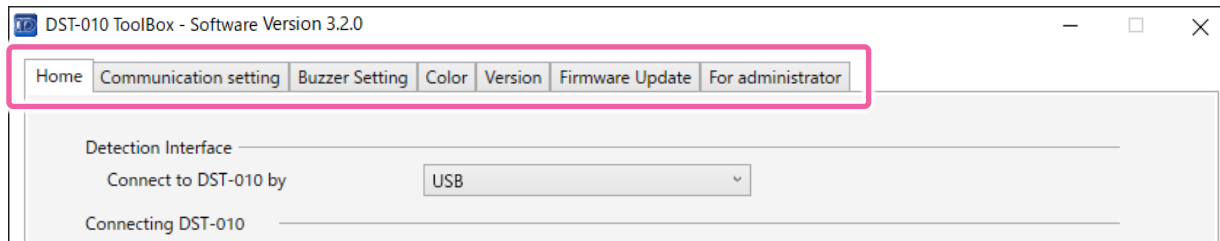


DST-010 is
not connected

4. About ToolBox Screen

Overview

Clicking these tabs allows you to switch screen and change settings of DST-010.

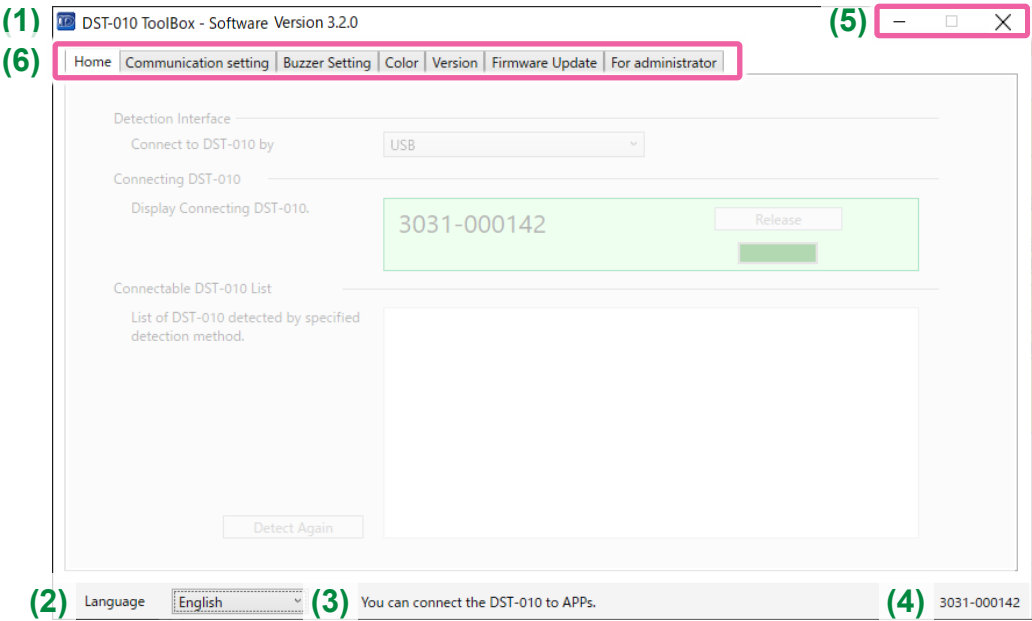


Display Conditions for Each Tab

Tab Name	Display Conditions
Home	Normally displayed.
Communication setting	Displayed when connecting to a product with wireless communication function.
Buzzer Setting	Normally displayed, but grayed out when DST-010 is not connected.
Color	Normally displayed, but grayed out when DST-010 is not connected.
Version	Normally displayed, but grayed out when DST-010 is not connected.
Firmware Update	Normally displayed, but grayed out when DST-010 is not connected and during wireless communication.
For administrator	Normally displayed, but grayed out when DST-010 is not connected and during wireless communication.

4. About ToolBox Screen

Main Window (Common to All Tabs)

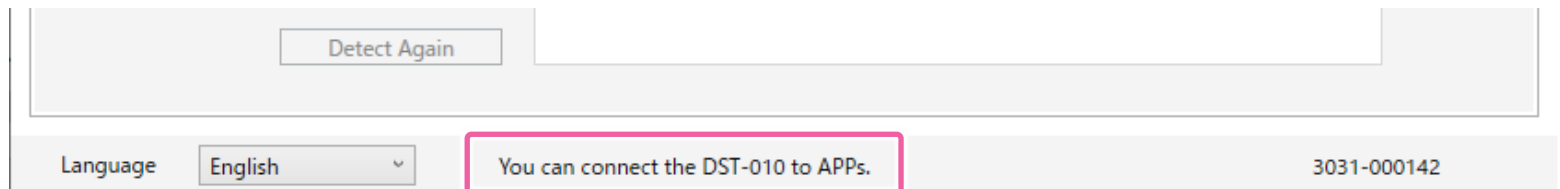


No.	Name	Description
(1)	Title bar	Displays the application name and the version of the DST-010 software.
(2)	Language	Switches language to be displayed. (Japanese or English)
(3)	Status indication	Displays status of DST-010. * See the next page for details.
(4)	Serial number of a connected DST-010	Displays the serial number of a connected DST-010.
(5)	“-” “×” button	Closes and stores the screen in the task tray. (A resident state)
(6)	Tabs	Switches the ToolBox screen by clicking these tabs.

4. About ToolBox Screen

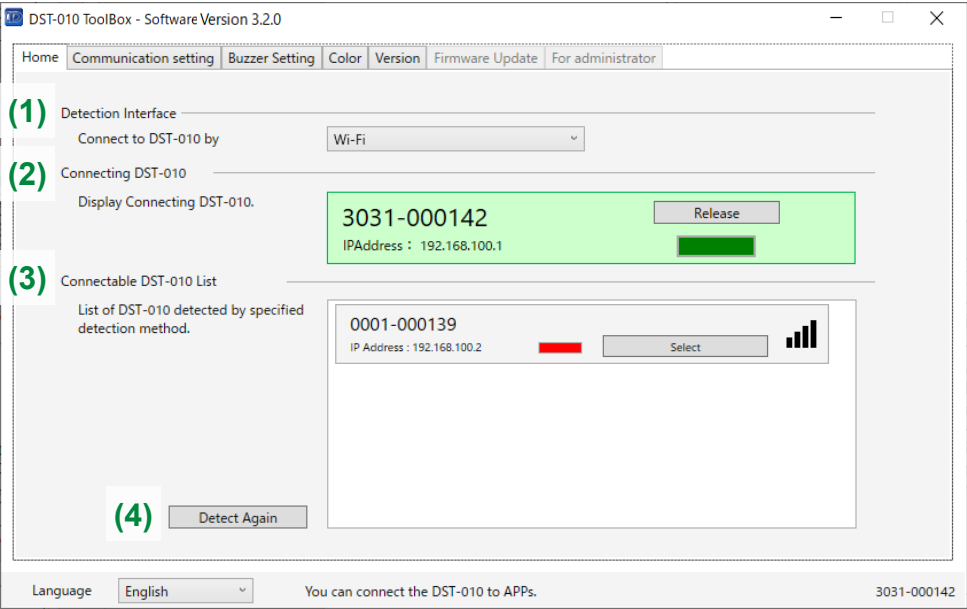
Reference: About status indication

The message showing status appears on the bottom of the main window and varies depending on the status of ToolBox and DST-010.



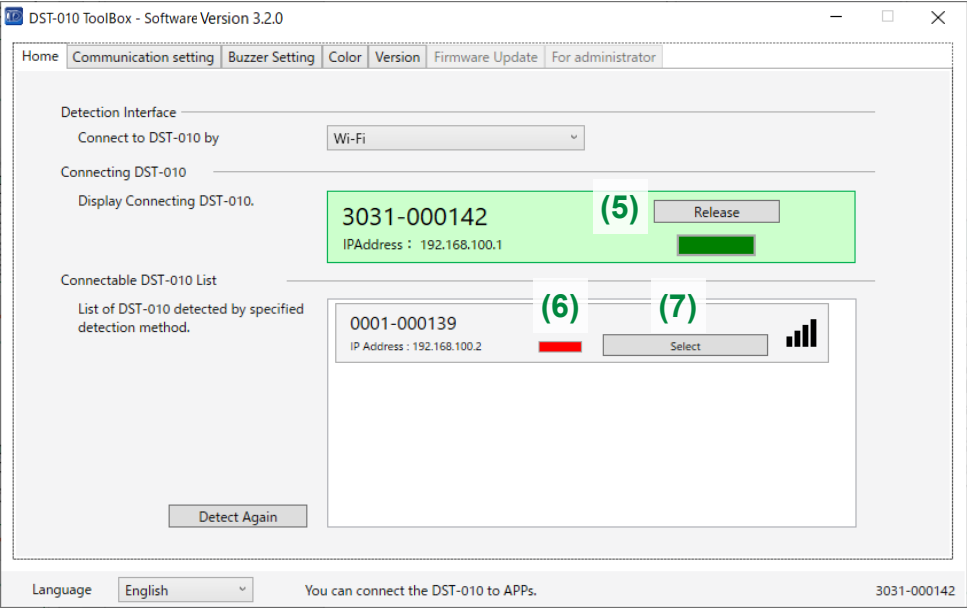
Message	Status
Starting ToolBox.	ToolBox is being started. (In process of initialization)
Waiting for connection.	DST-010 is not connected.
You can connect the DST-010 to APPs.	Connection with DST-010 is established, communication with diagnosis software is enabled.
Connecting to DST-010...	It is trying to connect to DST-010.
Communicating with DST-010. Cannot connect to the APP during communication.	Communication between DST-010 and ToolBox is in process.
Detecting devices.	It is detecting a connectable DST-010.
It's being processed. Please wait until the process is completed.	Operations of ToolBox such as firmware update are prohibited.
An application has been detected. ToolBox cannot be used.	Operations of ToolBox are prohibited during execution of other applications.
Exiting ToolBox.	After the "Exit" button is clicked, ToolBox is being terminated.

4-1. Home Tab



No.	Name	Description
(1)	Detection Interface	When connecting to DST-010, communication method can be selected from the pull-down menu.
(2)	Connecting DST-010	Displays the information of a DST-010 connected with Toolbox.
(3)	Connectable DST-010 List or Paired DST-010 List	When connecting by USB communication: Nothing is displayed on the list. When Wi-Fi is selected in (1): Connectable DST-010 is displayed. When Bluetooth is selected in (1): Paired DST-010 is displayed.
(4)	“Detect Again” button	Displays detected DST-010 on the list. Click the “Detect Again” button to change to connect to other DST-010 or to look for other DST-010.

4-1. Home Tab



No.	Name	Description
(5)	“Release” button or “Cancel connection” button	“Release”: Displayed when a wireless connection is established with DST-010. Click this button to cancel the connection. “Cancel connection”: Displayed when wireless connection is in process, or no response from the target DST-010 is received. Click this button to interrupt the connection and go to the list.
(6)	DST-010 identification color	Displays a color to distinguish DST-010. Total of nine colors can be selected. * See page 21 for the setting method.
(7)	“Select” button	To connect to the DST-010 selected from the list. To check information of the selected DST-010, go to the “Connecting DST-010” field.

4-2. Communication Setting Tab (for Check of Settings)

No.	Name	Description
(1)	SSID	Displays the SSID of the selected access point.
(2)	IP Address	Displays the setting method of the DST-010 IP address. “AUTO” determines the IP address by DHCP or Auto IP. For the fixed IP, the set IP address is displayed.
(3)	CH	Displays the number of the channel for accepting the connection of DST-010.
(4)	Port	Displays the number of the COM port where Bluetooth pairing is completed.

* “-” is displayed when no setting is made.

4-3. Communication Setting Tab (for Change of Settings)

DST-010 Toolbox - Software Version 3.2.0

Home Communication setting Buzzer Setting Color Version Firmware Update For administrator

(1) Wi-Fi Region Select North America

Select communication method for the DST-010.

Communication Method

(2) ☐ Wi-Fi (Infrastructure)
Connect with PC via access point. SSID : [redacted] (3) Setting / Change
IP Address : AUTO

(4) ☐ Wi-Fi (Peer to peer)
Connect directly to the PC with Wi-Fi. CH : 4 (5) Setting / Change
IP Address : 192.168.100.1

(6) ☒ Bluetooth
Connect directly to the PC with Bluetooth. Port : -

※Communication Method must be set-up prior to use.

(7) Apply the settings to DST-010

Language English

Communicating with DST-010. Cannot connect to the APP during communication. 3031-000142

No.	Name	Description
(1)	Wi-Fi Region Select	The country where you are using DST-010 can be selected from the pull-down menu.
(2)	Wi-Fi (Infrastructure)	Select this radio button, Wi-Fi (Infrastructure) will be set as the wireless connection method with DST-010. This is selectable when settings of SSID, password and IP Address have been made.
(3)	"Setting / Change" button	Opens the infrastructure mode setting screen. * See page 16 for details.
(4)	Wi-Fi (Peer to peer)	Select this radio button, Wi-Fi (Peer to peer) will be set as the wireless connection method with DST-010. This is selectable when settings of channel number and password have been made.
(5)	"Setting / Change" button	Opens the peer-to-peer mode setting screen. * See page 19 for details.
(6)	Bluetooth	Select this radio button, Bluetooth will be set as the wireless connection method with DST-010.
(7)	"Apply the settings to DST-010" button	Applies wireless connection settings to DST-010.

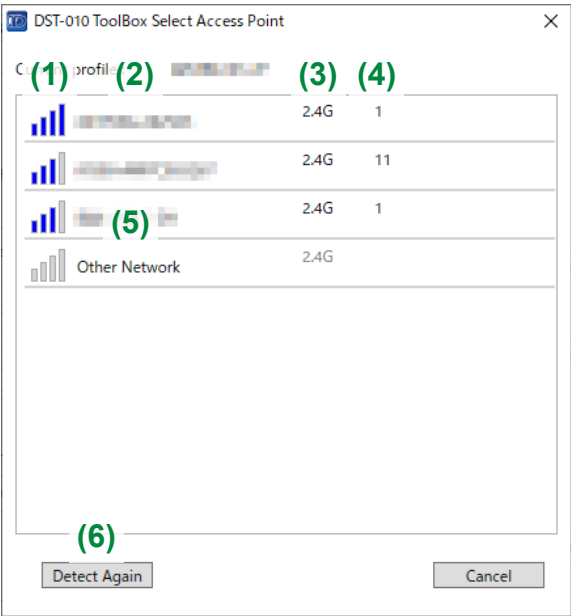
4-4. Infrastructure Mode Setting Screen

Click the “Setting / Change” button of Wi-Fi (Infrastructure), the access point selection screen will be opened, and the destination to connect can be changed.

[Tips]

The network detected by DST-010 will be displayed as an access point.

* The display may be different from the PC.



No.	Name	Description
(1)	Radio field intensity	Displays the radio field intensity of the access point.
(2)	SSID	Displays the SSID of the access point.
(3)	Frequency band	Displays the frequency band of the access point.
(4)	Channel number	Displays the channel number of the access point.
(5)	Other Network	Click this field, the network setting screen will be opened.
(6)	“Detect Again” button	Detects the surrounding access points and updates the screen display.

4-4. Infrastructure Mode Setting Screen

Select an access point,
the password entry screen will be
opened.

DST-010 ToolBox Infrastructure Password

(1) SSID :

(2) Password :

(3) ☐ Display Password

OK

Cancel

No.	Name	Description
(1)	SSID	Displays the SSID of the selected access point.
(2)	Password	Input the password of the access point. If the “OK” button is grayed out even when a password has been input, the password is incorrect. * See “DN-DST-010 Setup Manual” for details.
(3)	Display Password	Select this check box before inputting password, you can input the password while checking your input. If you select it with a password has been input (as shown in the above screen), the password will be cleared. * If the password is not to be changed when you accidentally cleared it, click the “Cancel” button.

4-4. Infrastructure Mode Setting Screen

Select “Other Network”, the network setting screen will be opened.

The screenshot shows the 'DST-010 ToolBox Wi-Fi Setup' dialog box. It has a title bar with a close button. The main area is titled 'Use the following settings'. It contains several fields and checkboxes, each with a green numbered annotation:

- (1) Existing profiles: A pull-down menu.
- (2) Network Name (SSID): A text input field.
- (3) Network Authentication: A pull-down menu.
- (4) Data Encryption: A pull-down menu.
- (5) Network Key: A text input field.
- (6) ☐ Display Network Key: A checkbox.
- (7) ☒ Obtain an IP address automatically: A checked checkbox.

Below the 'Obtain an IP address automatically' checkbox is a section titled 'Use the following IP address' containing two text input fields: 'IP address' (with '0.0.0.0') and 'Subnet Mask' (with '0.0.0.0'). At the bottom are 'OK' and 'Cancel' buttons.

No.	Name	Description
(1)	Existing profiles	Displays the SSIDs with connection history in the pull-down menu.
(2)	Network Name (SSID)	Input SSID manually.
(3)	Network Authentication	Displays the method of network authentication.
(4)	Data Encryption	Not to be used.
(5)	Network Key	Input the network key of the access point. If the “OK” button is grayed out even when a network key has been input, the network key is incorrect. * See “DN-DST-010 Setup Manual” for details.
(6)	Display Network Key	Select this check box before inputting password, you can input the password while checking your input. If you select it with a password has been input (as shown in the above screen), the password will be cleared. * If the password is not to be changed when you accidentally cleared it, click the “Cancel” button.
(7)	Obtain an IP address automatically	Select this check box, an IP address will be retrieved automatically by using the DHCP server function of the access point. To set the DST-010 IP address and the subnet mask to desired value, remove the check mark and input the IP address and the subnet mask manually.

4-5. Peer to Peer Setting Screen

Click the “Setting / Change” button of Wi-Fi (Peer to peer), the Peer to peer setting screen will be opened, and the settings can be changed.

DST-010 Toolbox Wi-Fi Setup

Peer to peer setting

(1) DST-010 SSID: DST-010_3031-000142

(2) Connection channel: 4 (2.4G)

(3) Connection password: *****

(4) ☐ Display Password

(5) ☒ Advanced Setting

(6) ☒ Use the DHCP server function of the DST-010

(7) ☐ Obtain an IP address of DST-010 manually

IP address: 192 . 168 . 100 . 1

SubNetMask: 255 . 255 . 255 . 0

OK Cancel

No.	Name	Description
(1)	DST-010 SSID	Displays the SSID of a connected DST-010.
(2)	Connection channel	Select a channel number from the pull-down menu.
(3)	Connection password	Input a desired password. * See “DN-DST-010 Setup Manual” for details.
(4)	Display Password	Displays the input password.
(5)	Advanced Setting	Select this check box, settings in (6) and (7) can be made.
(6)	Use the DHCP server function of the DST-010	Select this check box, an IP address will be automatically assigned to a connected PC by using the DHCP server function of the DST-010.
(7)	Obtain an IP address of DST-010 manually	Select this check box, the DST-010 IP address and the subnet mask can be set. 192.168.100.1/255.255.255.0 is set by default.

4-6. Buzzer Setting Tab (The connection reminder buzzer)

DST-010 Toolbox - Software Version 3.2.0

Home Communication setting Buzzer Setting Color Version Firmware Update For administrator

(1) ☐ Disable the connection reminder buzzer

(2) ☒ Enable the connection reminder buzzer

If the DST-010 is not communicating with the PC for more than the set time, the buzzer will sound to remind you to prevent forgetting to pull out.

(3) Time to buzzer(min): (1~60)

(4) Tone (5) Pattern

High (4.3kHz) Continuous

Middle (1.8kHz) Intermittent 1

Low (700Hz) Intermittent 2

(6) Check sound

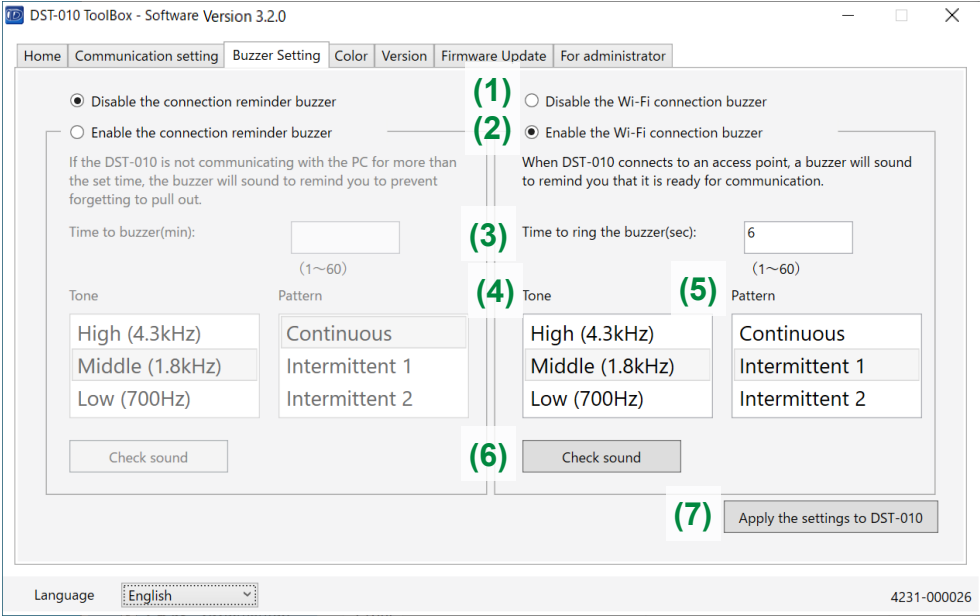
(7) Apply the settings to DST-010

Language English 4231-000026

5. About ToolBox Screen

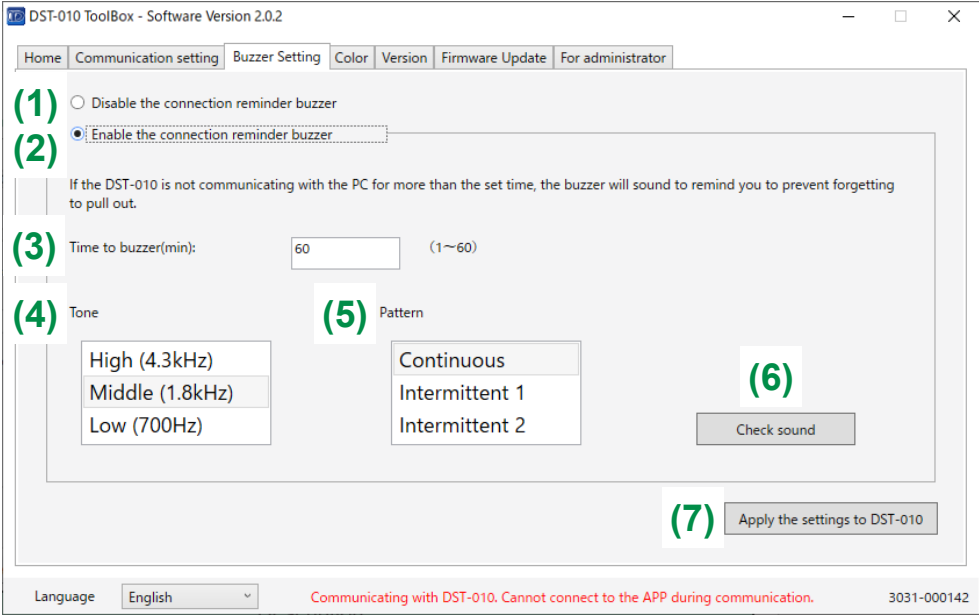
No.	Name	Description
(1)	Disable the connection reminder buzzer	Select this radio button, the reminder buzzer function will be disabled.
(2)	Enable the connection reminder buzzer	Select this radio button, the reminder buzzer function will be enabled. (The buzzer is ready to sound)
(3)	Time to buzzer(min):	Specify the time until the buzzer sounds.
(4)	Tone	Select the sound range (Hz) of the buzzer.
(5)	Pattern	Select the pattern of the buzzer.
(6)	"Check sound" button	Have the buzzer sound with the set sound range and pattern. When "Continuous" is selected in (5): About 3 seconds When "Intermittent 1" or "Intermittent 2" is selected in (5): 3 cycles
(7)	"Apply the settings to DST-010" button	Applies reminder buzzer settings to DST-010.

4-6. Buzzer Setting Tab (The Wi-Fi connection buzzer)



No.	Name	Description
(1)	Disable the Wi-Fi connection buzzer	Select this radio button, the reminder buzzer function will be disabled.
(2)	Enable the Wi-Fi connection buzzer	Select this radio button, the reminder buzzer function will be enabled. (The buzzer is ready to sound)
(3)	Time to ring the buzzer(sec):	Specify the time for the DST-010 to notify you with a buzzer after connecting to the access point.
(4)	Tone	Select the sound range (Hz) of the buzzer.
(5)	Pattern	Select the pattern of the buzzer.
(6)	"Check sound" button	Have the buzzer sound with the set sound range and pattern. When "Continuous" is selected in (5): About 3 seconds When "Intermittent 1" or "Intermittent 2" is selected in (5): 3 cycles
(7)	"Apply the settings to DST-010" button	Applies reminder buzzer settings to DST-010.

4-6. Buzzer Setting Tab

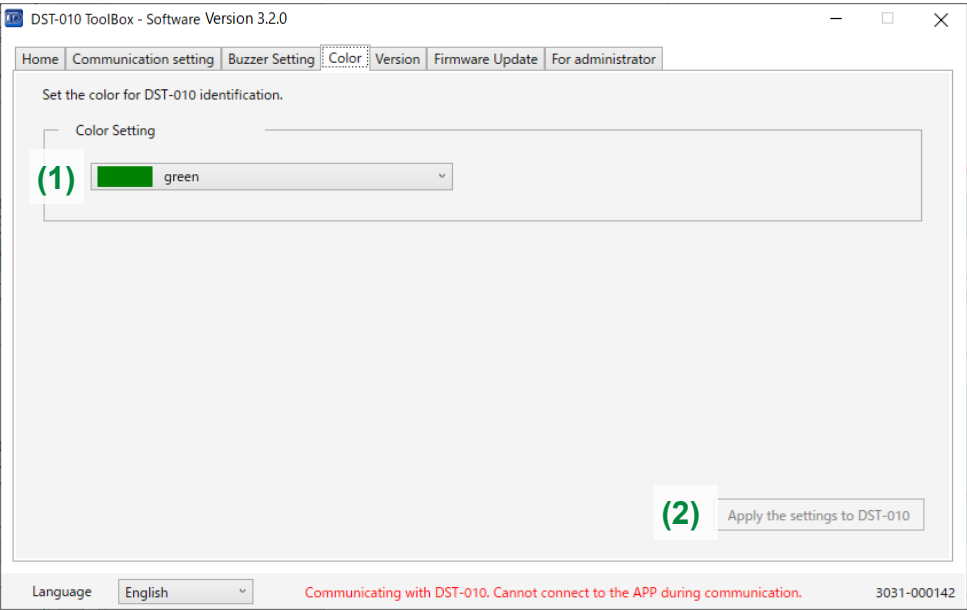


For those using v2.0.2

➤ About ToolBox Screen

No.	Name	Description
(1)	Disable the connection reminder buzzer	Select this radio button, the reminder buzzer function will be disabled.
(2)	Enable the connection reminder buzzer	Select this radio button, the reminder buzzer function will be enabled. (The buzzer is ready to sound)
(3)	Time to buzzer(min):	Specify the time until the buzzer sounds.
(4)	Tone	Select the sound range (Hz) of the buzzer.
(5)	Pattern	Select the pattern of the buzzer.
(6)	"Check sound" button	Have the buzzer sound with the set sound range and pattern. When "Continuous" is selected in (5): About 3 seconds When "Intermittent 1" or "Intermittent 2" is selected in (5): 3 cycles
(7)	"Apply the settings to DST-010" button	Applies reminder buzzer settings to DST-010.

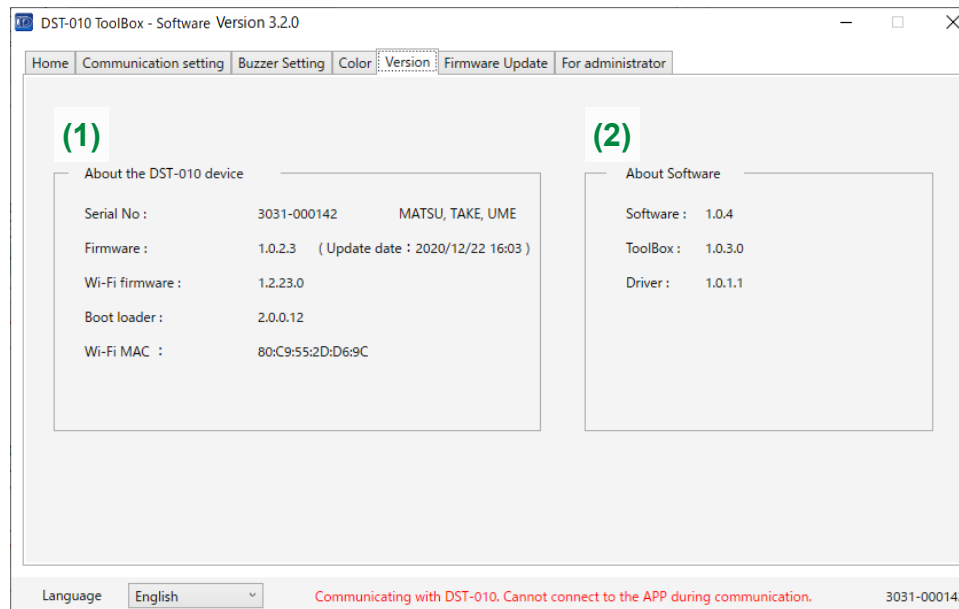
4-7. Color Tab



No.	Name	Description
(1)	Color Setting combo box	Select the color (total of 9) from the pull-down menu.
(2)	"Apply the settings to DST-010" button	Set the selected color as the DST-010 identification color. The DST-010 identification color displayed on the Home tab screen will be changed. * See page 12 for details.

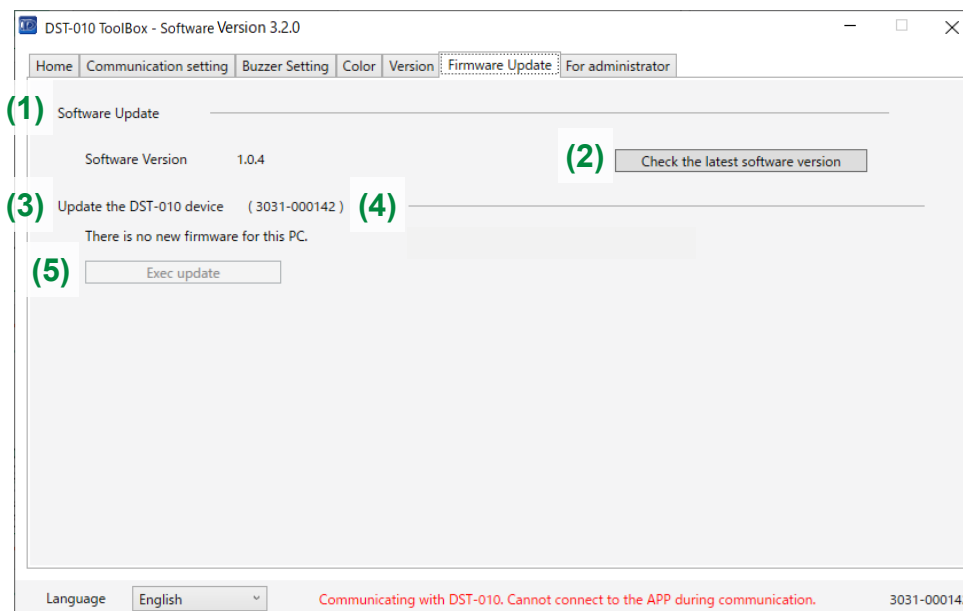
[Tips]
By attaching the optional front panel label (9 colors) to DST-010, you can match the color of DST-010 with the identification color on ToolBox.

4-8. Version Tab



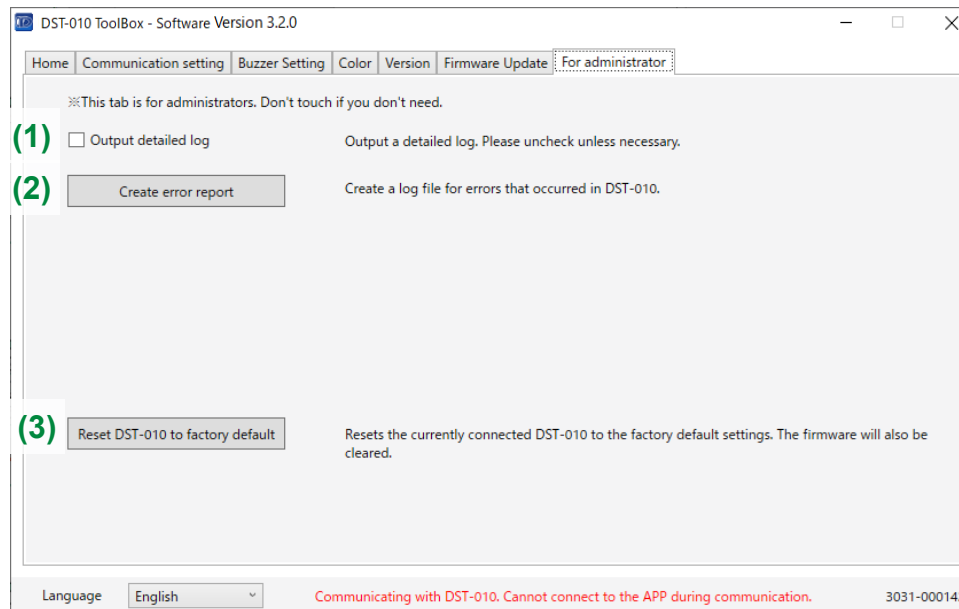
No.	Name	Description
(1)	About the DST-010 device	Displays the information read from a connected DST-010. * “-” is displayed to “Wi-Fi firmware :” and “Wi-Fi MAC :” for product without Wi-Fi.
(2)	About Software	Software: Displays the version of the “DST-010 software”. ToolBox: Displays the version of “ToolBox”. Driver: Displays the version of the “DST-010 driver”.

4-9. Firmware Update Tab



No.	Name	Description
(1)	Software Update	Displays the version of the “DST-010 software” which is installed to your PC.
(2)	“Check the latest software version” button	To check the latest software version, access the product home page of DST-010.
(3)	Update the DST-010 device	Compares the version of the firmware installed to your PC with the firmware version read from DST-010, then displays whether it is necessary to update. “There is no new firmware for this PC.” : The firmware installed to your PC and that installed to DST-010 have the same version. “There is a new firmware version. Please update.” : It is necessary to update. * If it is necessary to update, when DST-010 is connected, the Firmware Update tab will be opened automatically.
(4)	(Serial No.)	Displays the serial number of a connected DST-010.
(5)	“Exec update” button	Updates the DST-010 firmware. If there is no firmware able to update, this button will be grayed out.

4-10. For Administrator Tab



No.	Name	Description
(1)	Output detailed log	Outputs detailed log data required for error analysis. * Select this check box only when necessary.
(2)	"Create error report" button	Creates a report required for error analysis.
(3)	"Reset DST-010 to factory default" button	Initializes a connected DST-010 to the factory default state.

[Caution]

Since this tab is used for an investigation when a failure occurs, never touch it unless you are asked to. The output of log data may overwhelm the storage space of your PC.